

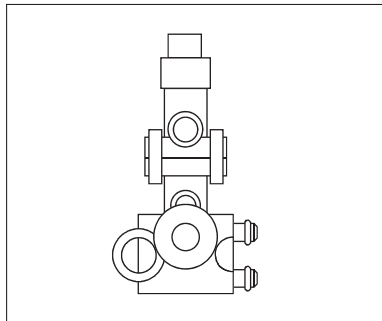
Control blocks

PSt 2A

PSt 3A



General



The pneumatic control blocks are used to activate the consumers (bottom valves). The pre-control block is generally used to activate the vent valves. The visual display on the control block indicates the activated consumers.

The desired number of control blocks can be easily added in sequence.

•**Connection options** Operating air supply Connection to remote trigger (e.g. level switch) Connection to consumers (e.g. bottom valve) Common trigger line.

•**Control block group** Pre-control block and control-blocks can be easily added in sequence.

•**Design of pull knob** Black, red, green Numbers 0-9

Order numbers, accessories:

Model:

PSt 2A control block 1005070
PSt 3A pre-control block 1009610

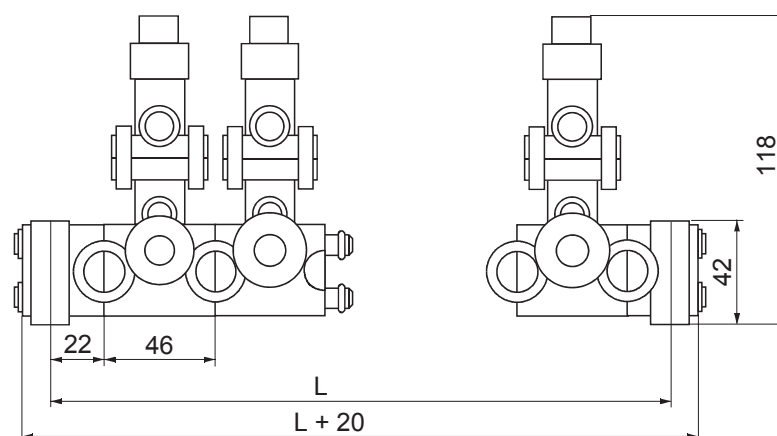
Accessories:

End piece left PEL 1061050
End piece right PER 1009636
with angled adapter:
End piece left PEWL 1019607
End piece right PEWR 1019615

Colors of pull knob:

black 1059099
red 1059110
green 1059102
please indicate when ordering

Dimensions:



Block number	1	2	3	4	5	6	7	8	9	10
Dim L	90	136	182	228	274	320	366	412	458	504